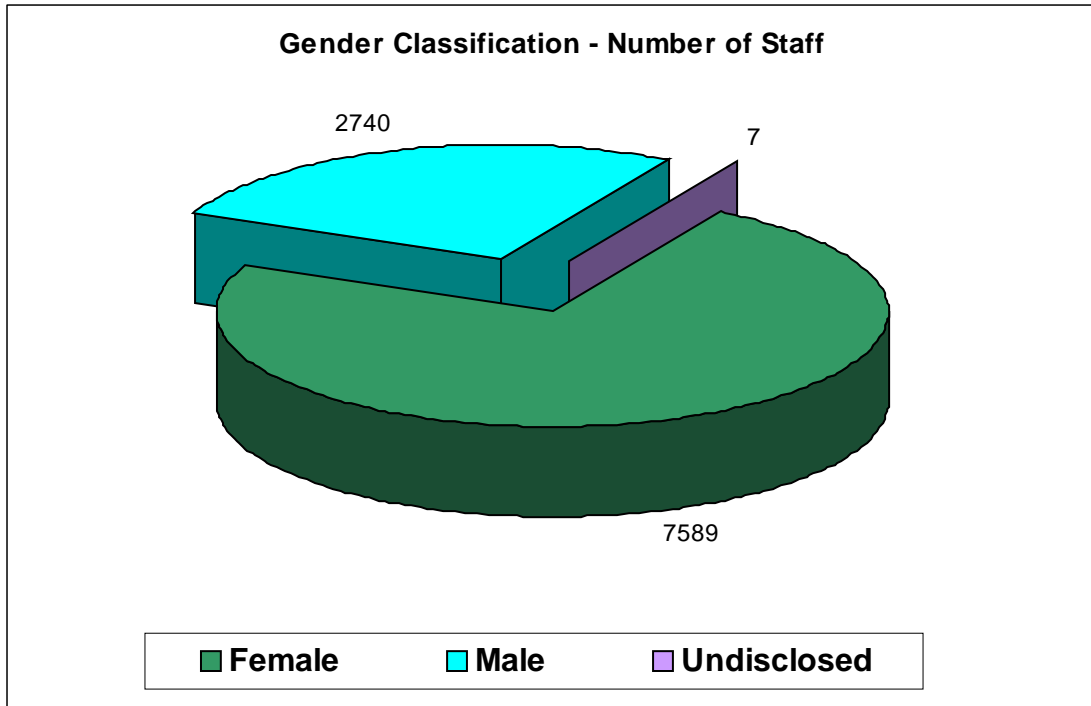


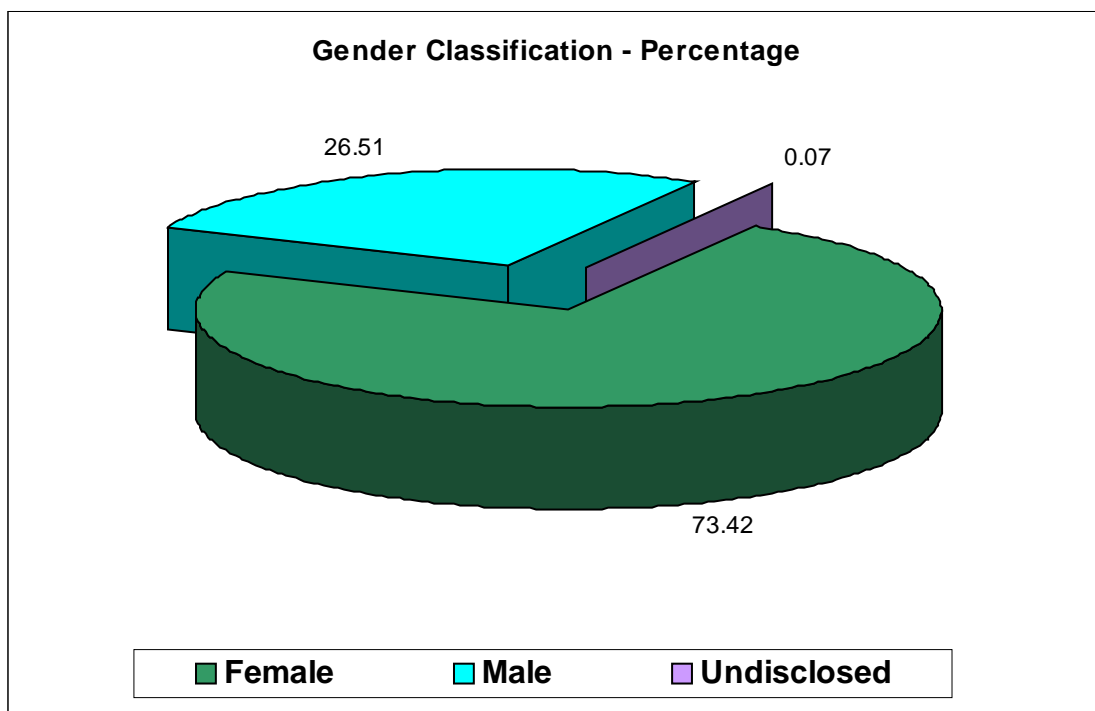
A summary of staff statistical data produced and analysed by the Authority. This information will be used to inform and drive equality changes during 2008/09 and beyond. Future analysis will also include Gender issues analysed by Grade, but it was not possible to include this information as part of this report.

**Gender**

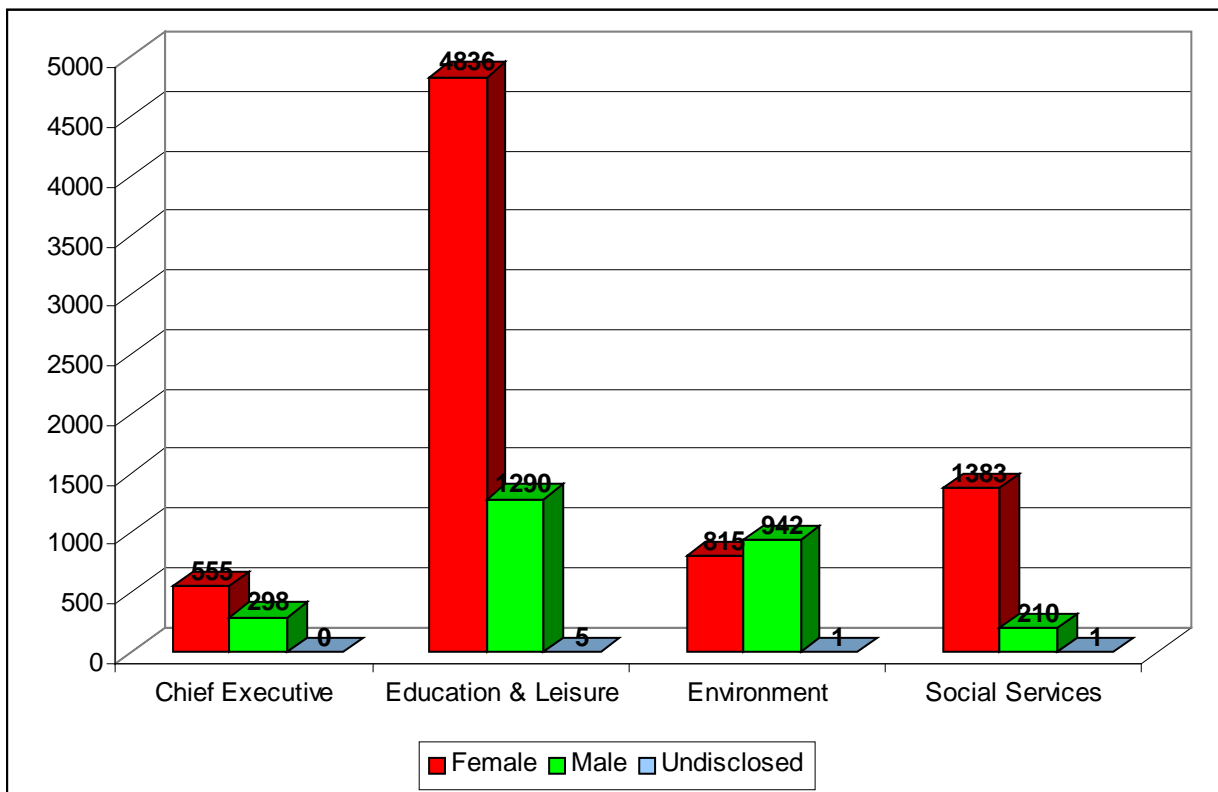
The Authority, at the time of the analysis, employed 10,336 people, which can be broken down into gender classification as follows :-



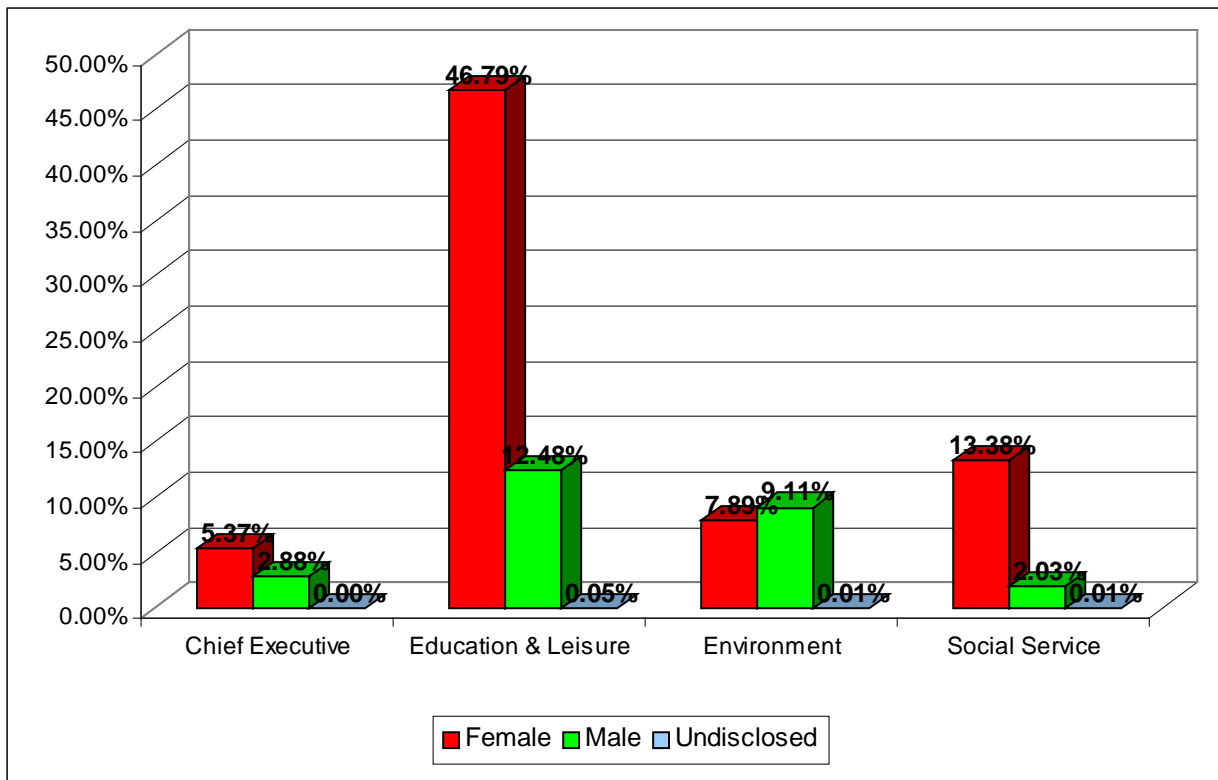
This is as follows when represented as a %



**Gender Classification of each Directorate.**

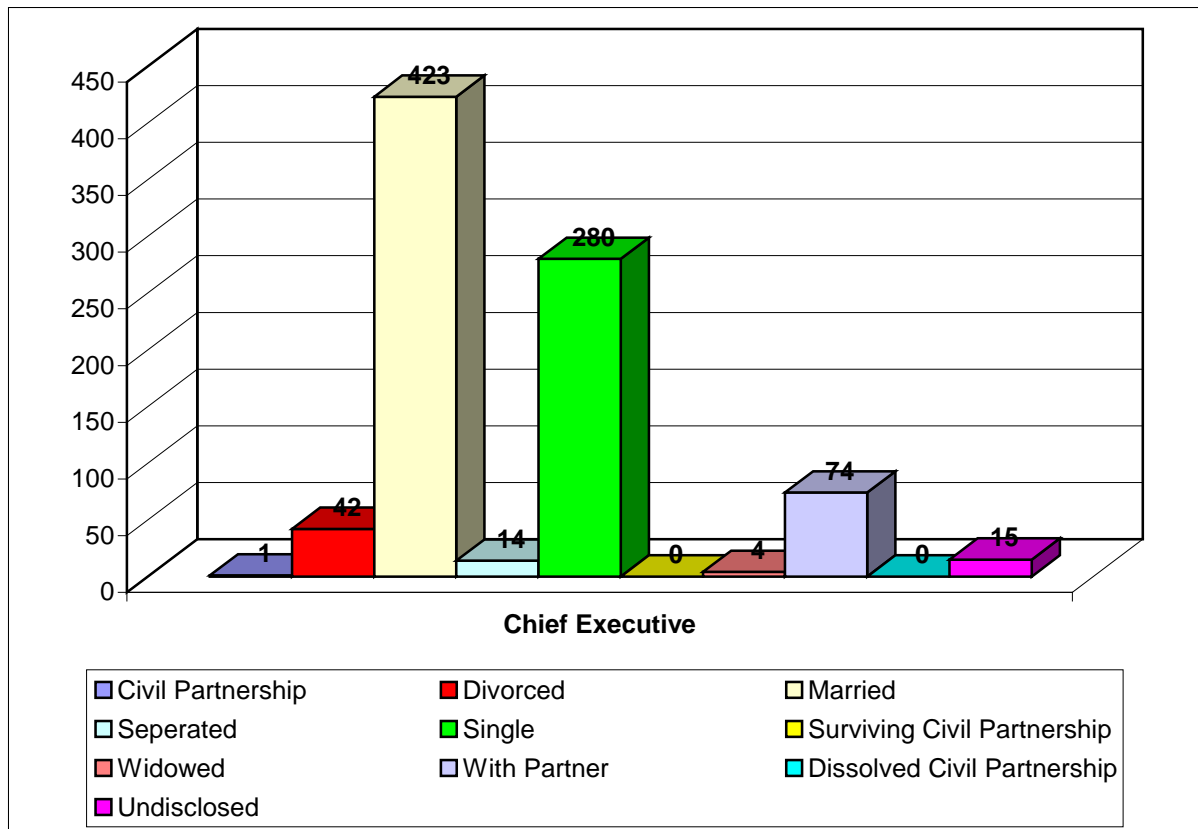


This is as follows when represented as a %

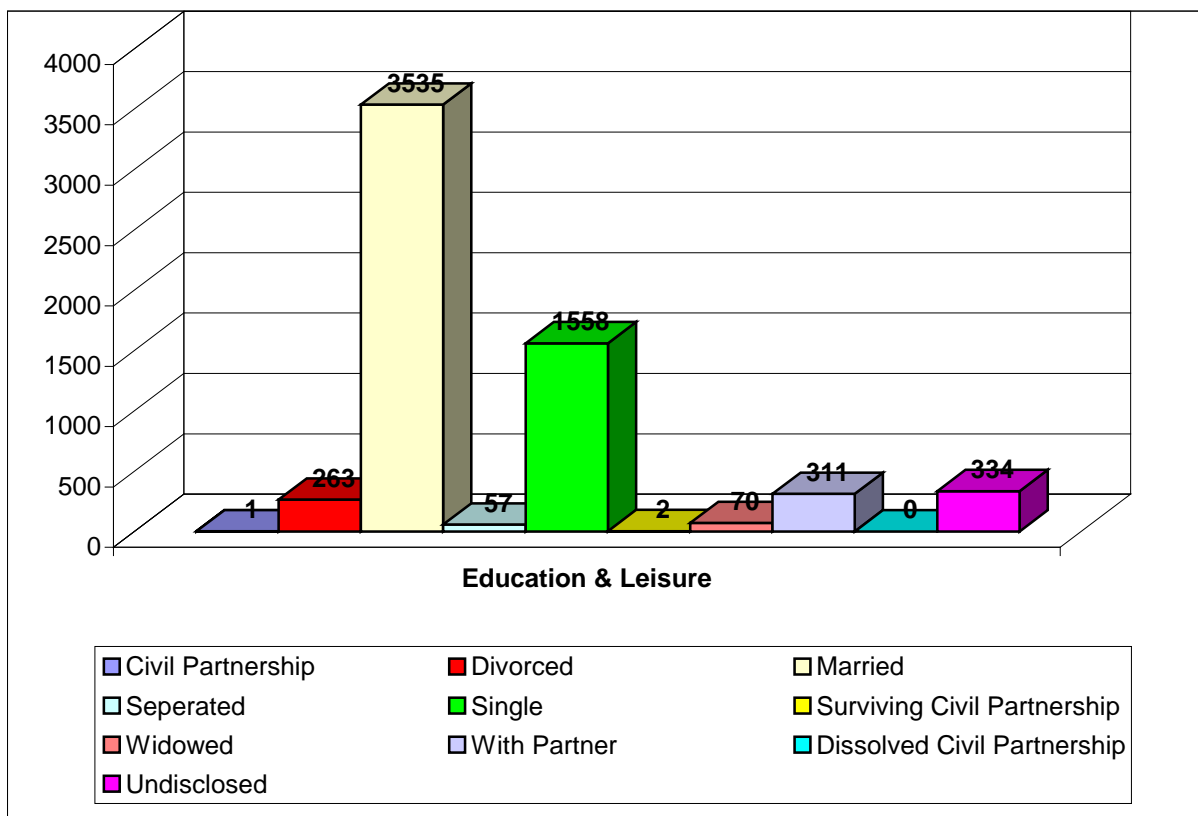


## Marital Status for each Directorate.

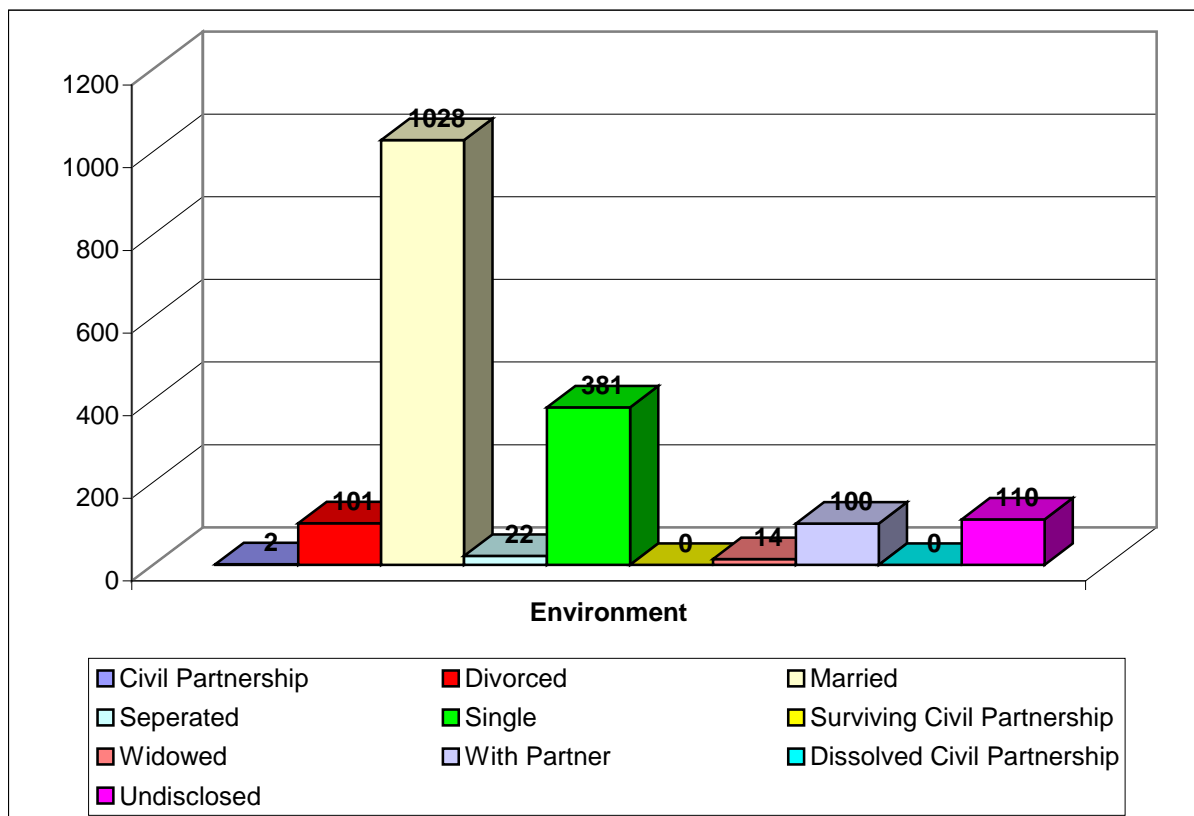
### Chief Executive



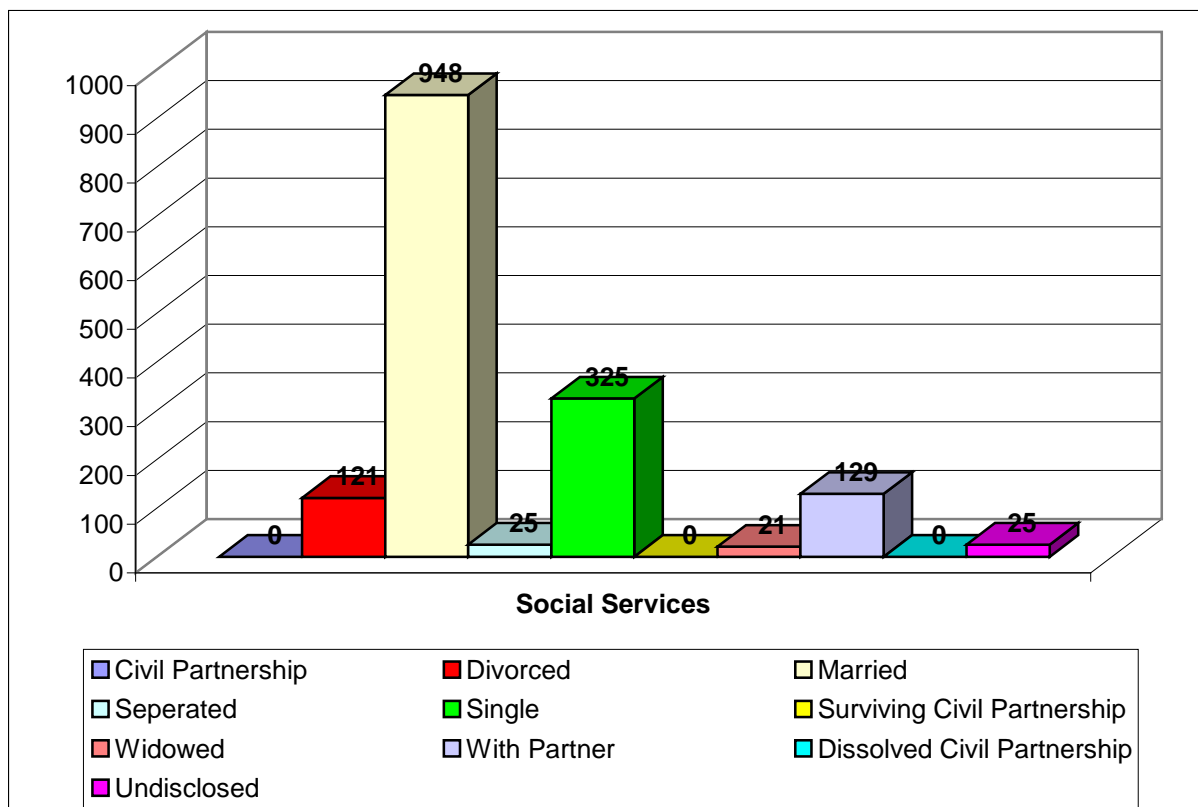
### Education and Leisure



## Environment



## Social Services



### Marital Status - total for Caerphilly County Borough Council

